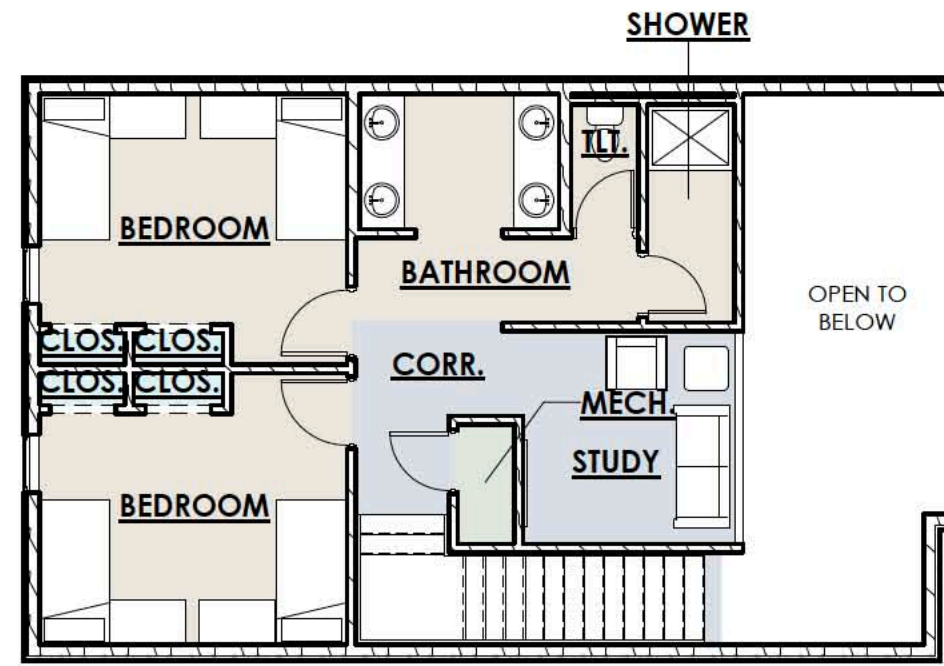
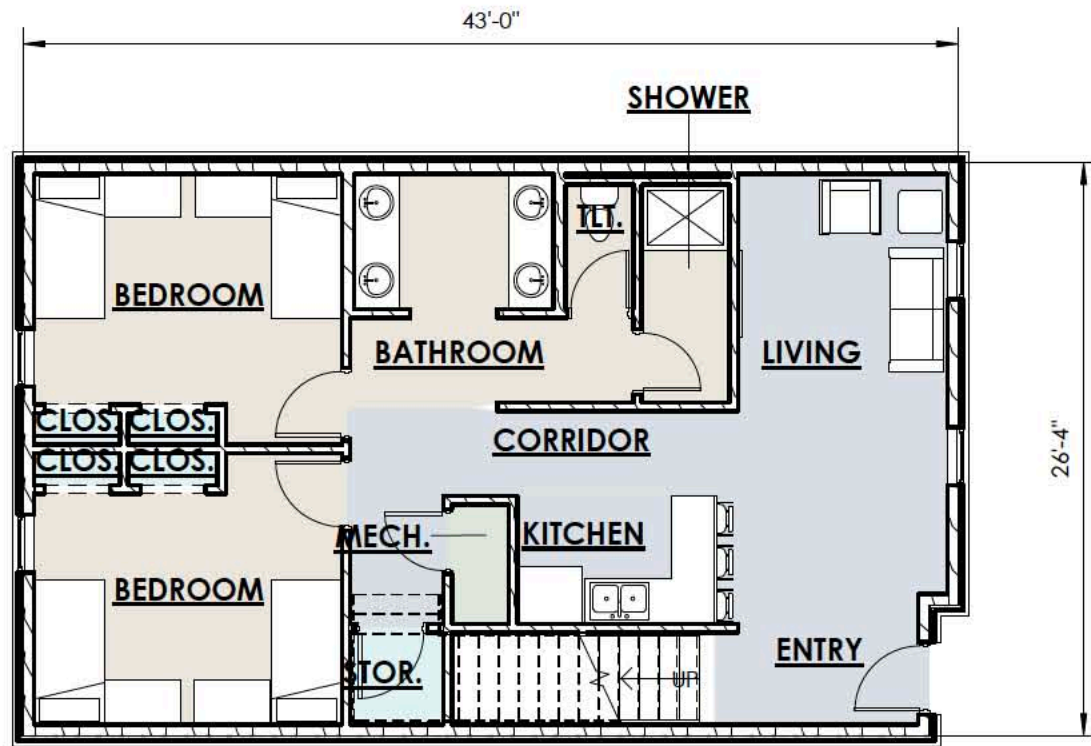


STUDENT HOUSING

HOUSING MODULE



STUDENT HOUSING BUILDING AREAS

Building 'A' - 32 Beds (4 Two-Story Units)

First Floor = 4,482 sqft.
 Second Floor = 3,057 sqft.
 Total = 7,539 sqft.

Building 'B' - 34 Beds (4 Two-Story Units + 2 Studios)

First Floor = 5,355 sqft.
 Second Floor = 3,057 sqft.
 Total = 8,412 sqft.

Building 'C' - 42 Beds (5 Two-Story Units + 2 Studios)

First Floor = 6,445 sqft.
 Second Floor = 3,823 sqft
 Total = 10,268 sqft x 2 = 20,536 sqft

Building 'D' - Community / Laundry

First Floor = 781 sqft

TOTAL AREA = 37,268 sqft.

HOUSING MODULE - First Floor

HOUSING MODULE - Second Floor