

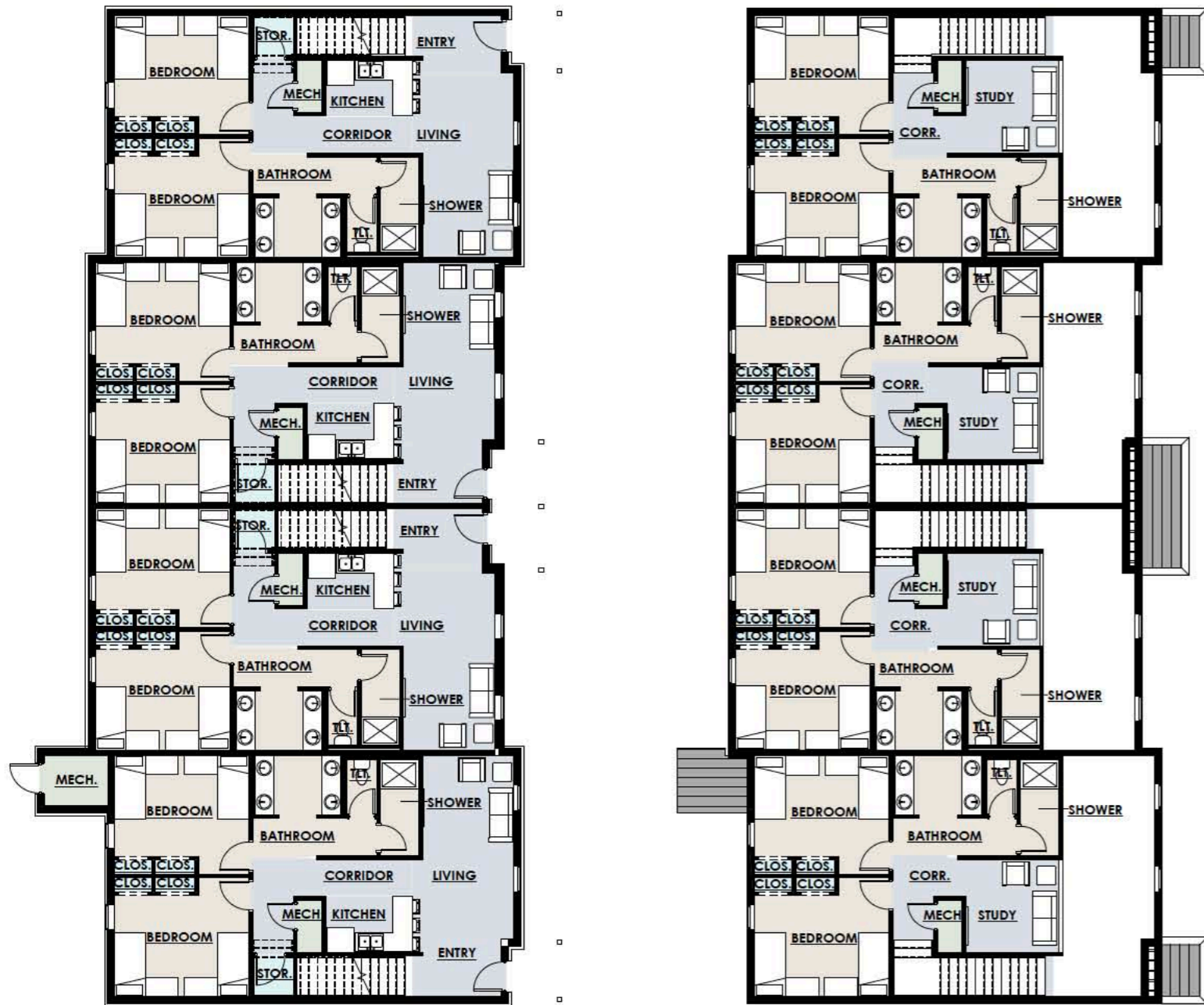
STUDENT HOUSING

BUILDING 'A'

STUDENT HOUSING BUILDING AREAS

Building 'A' - 32 Beds (4 Two-Story Units)

First Floor = 4,482 sqft.
Second Floor = 3,057 sqft.
Total = 7,539 sqft.



Building A - First Floor

Building A - Second Floor

