

STUDENT HOUSING

BUILDING 'A'

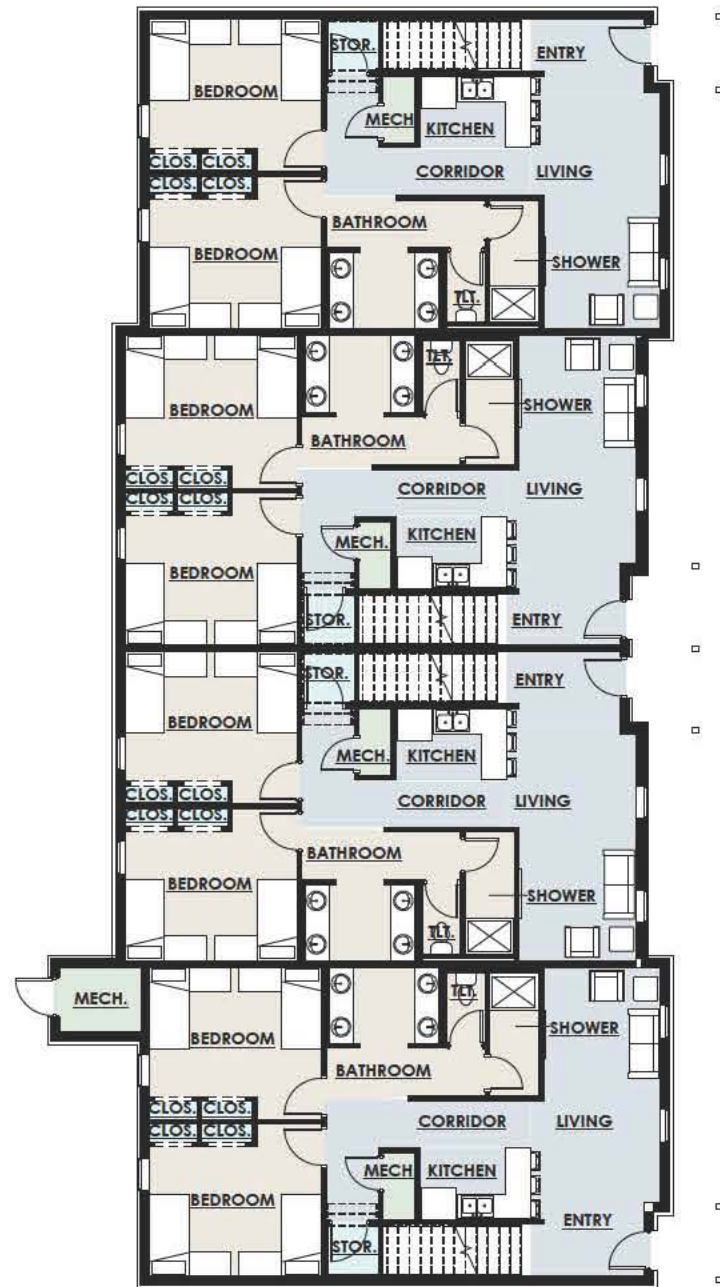
STUDENT HOUSING BUILDING AREAS

Building 'A' - 32 Beds (4 Two-Story Units)

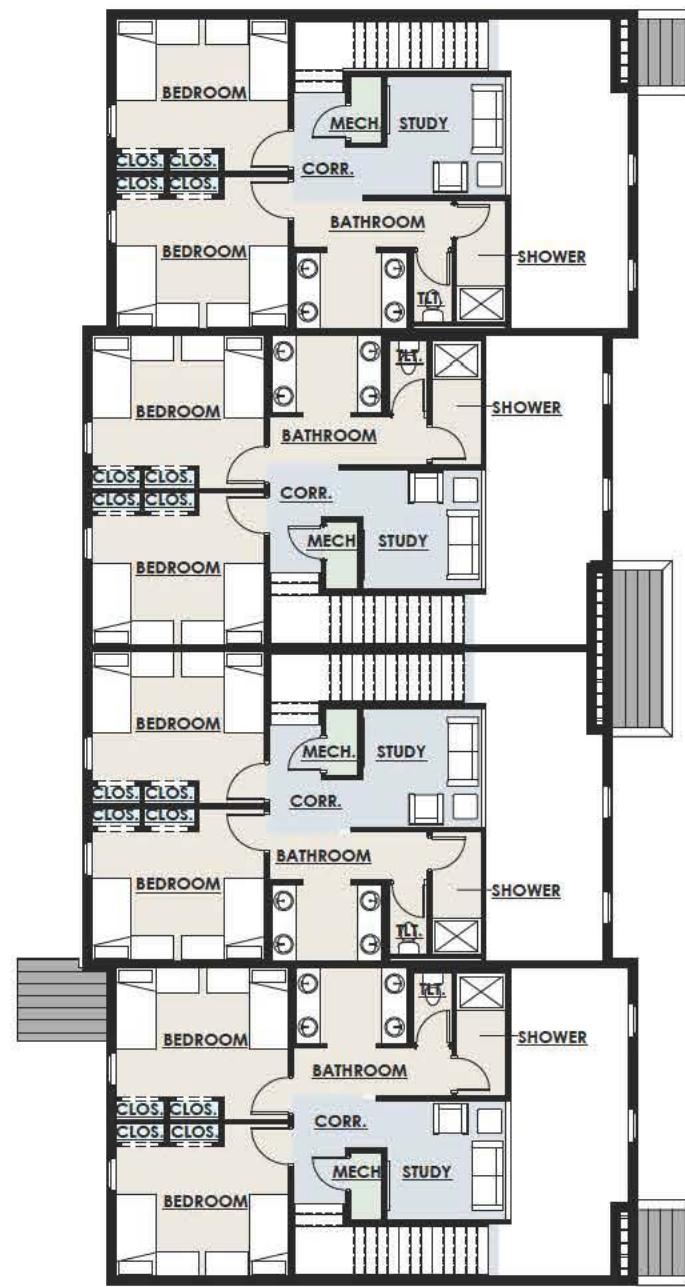
First Floor = 4,482 sqft.

Second Floor = 3,057 sqft.

Total = 7,539 sqft.



Building A - First Floor



Building A - Second Floor

